



DTA Race Electronics
Unit 10, Boston Court
Kansas Ave
Manchester
M50 2GN
England

Tel: (+44) (0)161 877 1419
Fax: (+44) (0)161 877 7086
Email: office@dtafast.co.uk
Website: www.dtafast.co.uk

USB Driver Settings

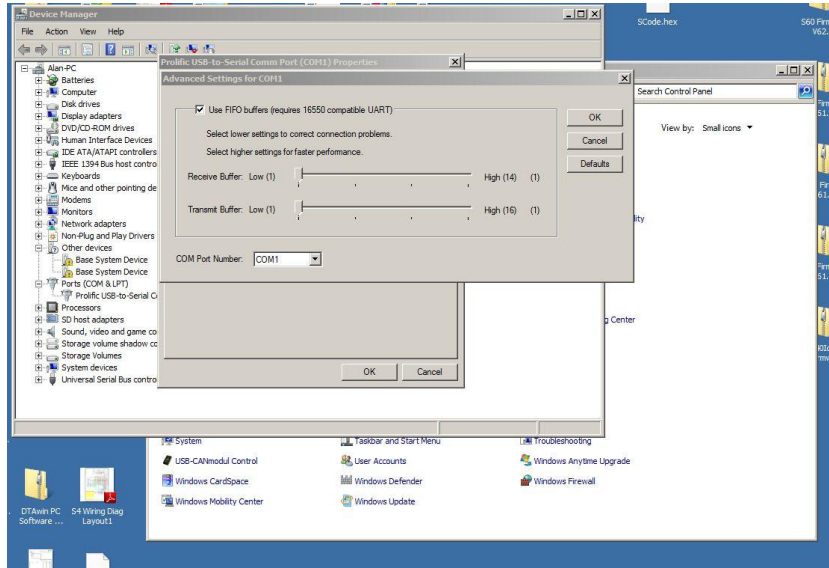
After installation of the USB driver as per the instructions, attach the converter.

In XP:-

Open Windows Start Menu/Control Panel/System/Hardware/Device Manager/Ports Com and LPT. Double Click on the USB-> Com Converter/Port Settings/Advanced and set the COM port number (usually 1) and FIFO's as below. Reboot the computer after doing this.

In Win 7

Open Windows Start Menu/Hardware and Sound/Device Manager/Ports Com and LPT. Double Click on the USB-> Com Converter/Port Settings/Advanced and set the COM port number (usually 1) and FIFO's as below. Reboot the computer after doing this.



If reliable communications are not achieved, download the latest drivers from www.dtafast.co.uk/downloads .Choose PC Software. Click on PL2303_Prolific_DriverInstaller_v1.6.0.zip to download it. Unzip and install it. Reset the above details (especially the COM port number) as this will have changed. Reboot the computer after doing this. If when using Windows Vista or Win 7 you have problems use the PL2303_Prolific_WDMDriverInstaller_v1.6.1.zip instead and try again.

Make sure you always use the same USB port in your PC as using a different one can cause windows to use a different driver.

If connection problems persist or you get errors such as “Error reading serial port” you need to check the version number of the driver that Windows is using. Go to Device Manager and open the Prolific properties page as above. Click on the “Driver” tab across the top.

Below is a list of known good drivers:-

3.4.62.293
3.4.36.247
3.4.42.258
2.1.30.193 (Installer Version V1.6.1)
3.4.31.231 (Installer Version V1.6.0)

Below is a list of drivers which do NOT work with our software

3.4.48.472
3.3.5.122
3.4.48.272

If you have one of these known bad drivers or the one you have just does not work (please tell us the number so we can add it to the list) click on the **UNINSTALL** button, remove the USB adapter and run the installer package from our web site as described above.

Note that as of May 2013 Prolific have added a new driver to the Windows live update system. This driver unfortunately is one of the ones that does not work. If after windows has updated itself your USB adapter stops working, click on the “Roll Back Driver” button on the properties page.

In Win 7 you can also see what drivers are already on your machine. In the Prolific properties page driver tab choose:-

Update Driver/Browse my Computer for Driver Software/Let me pick from a list of drivers on my computer. This will show a list of drivers, with their version numbers on your machine. If one of the above known good ones is present, highlight that and click the next button.