



DTA Fast
52-54b Regent Street
Leamington Spa
CV32 5EG

t: +44 (0) 1926 889121
e: office@dtafast.co.uk
w: www.dtafast.co.uk

Select Correct USB Driver

Windows often installs updated drivers automatically, and defaults to this latest version. Not all of these drivers are compatible with our software.

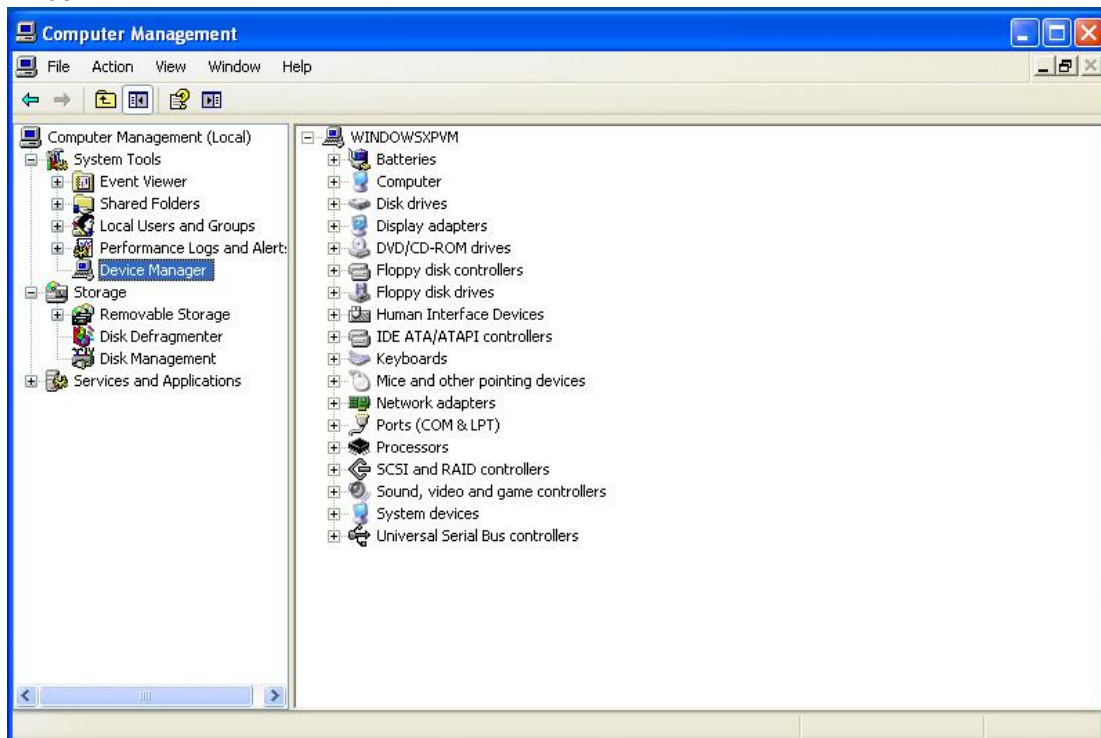
If you are experiencing communications problems, ensure you are using the correct driver.

In Windows XP

Click the start button, right click on My Computer, and click Manage:

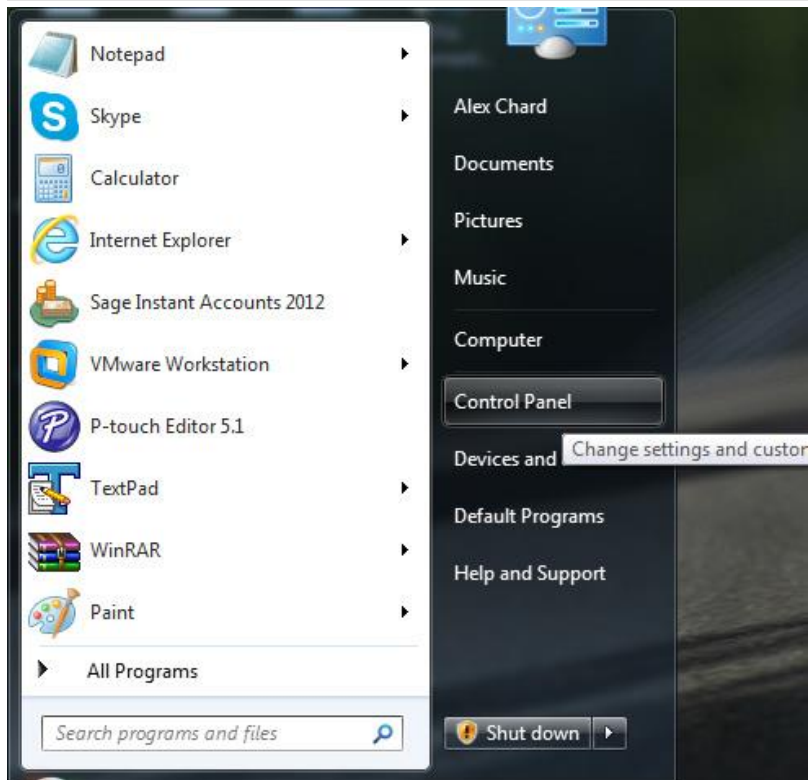


This will open the Computer Management Console. Click on the Device Manager Option in the left hand window.

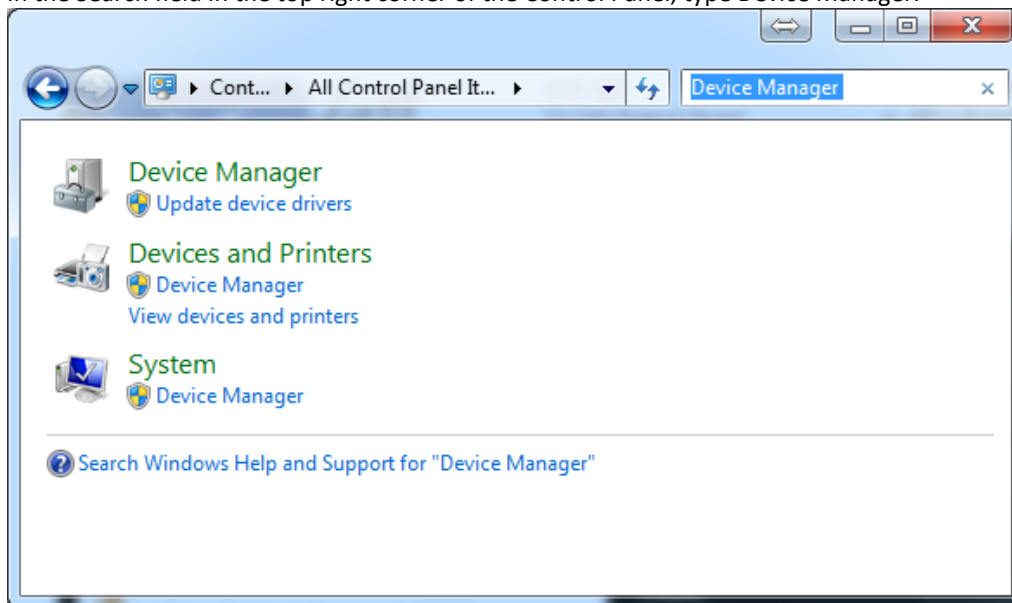


In Windows Vista/7

Click the start button, and select the Control Panel option:



In the Search field in the top right corner of the Control Panel, type Device Manager.



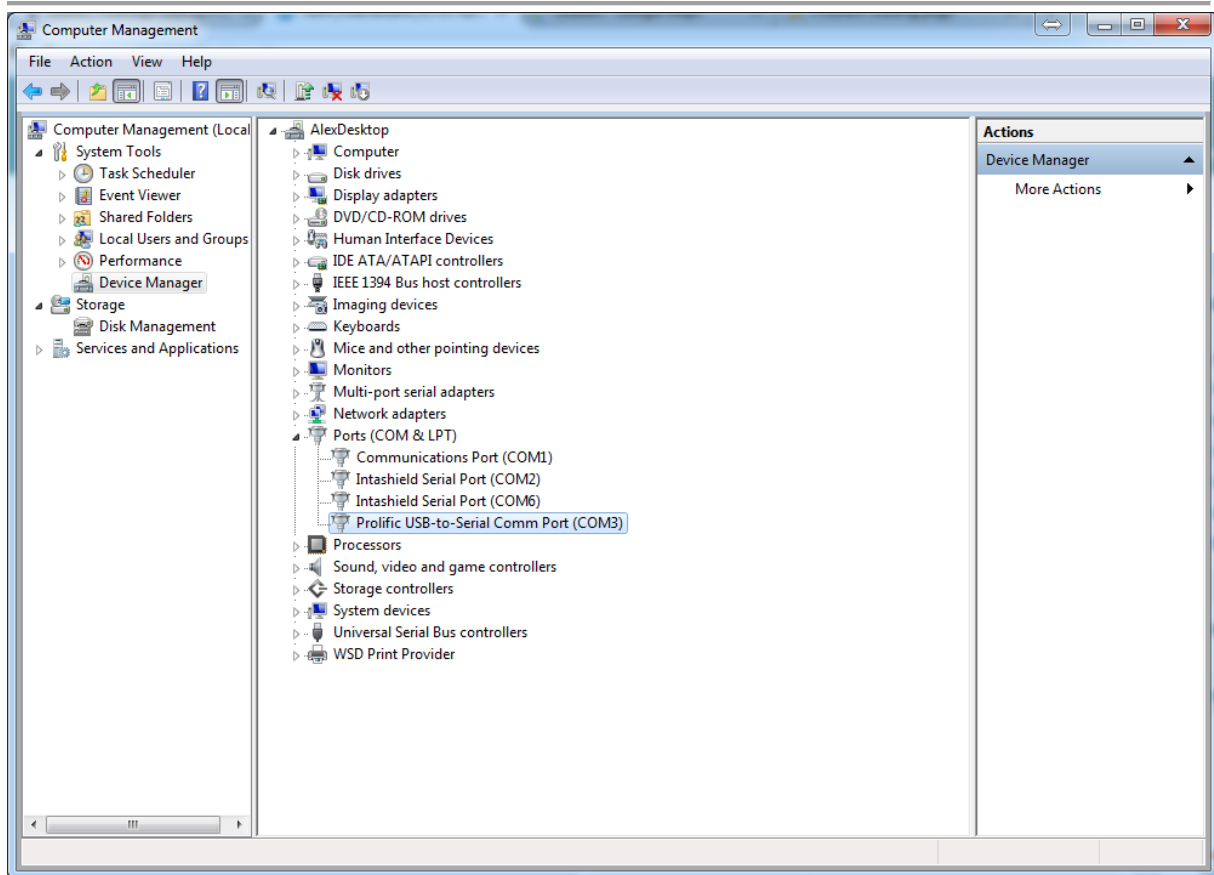
Click the Device Manager option to open the Device Manager.

Click the Device Manager option to open the Device Manager. Expand the Ports (COM & LTP) value, which should have a USB Serial Port (COM2) or similar under it.

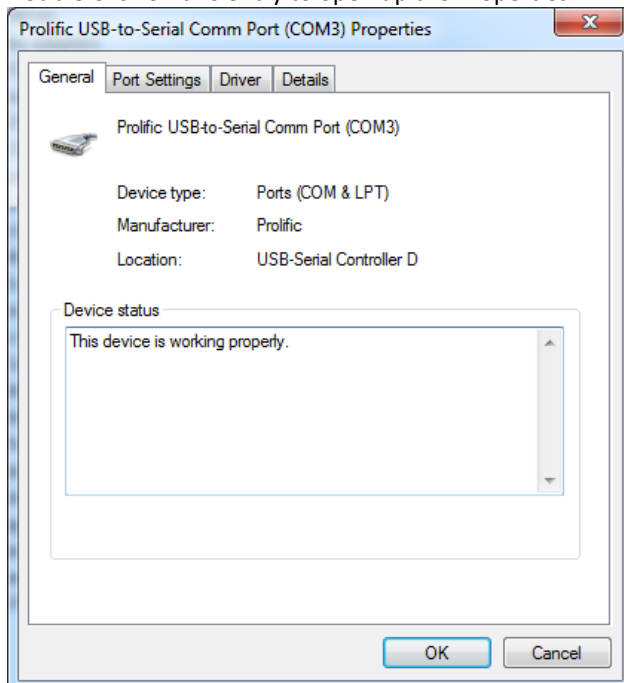


DTA Fast
52-54b Regent Street
Leamington Spa
CV32 5EG

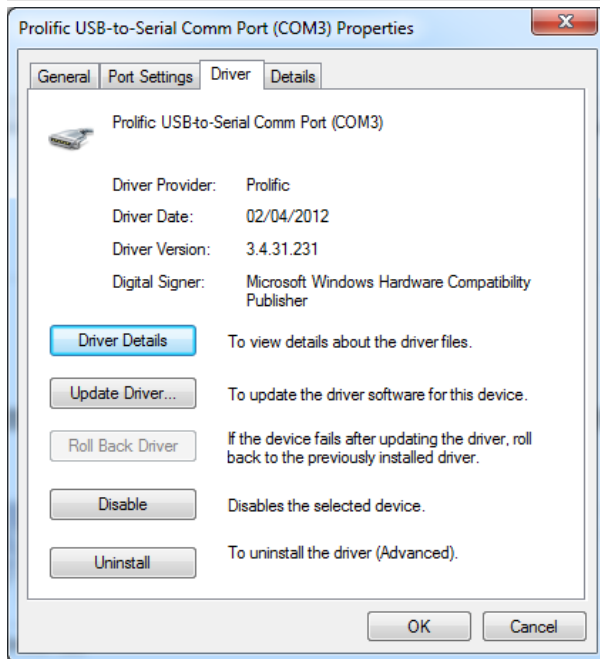
t: +44 (0) 1926 889121
e: office@dtafast.co.uk
w: www.dtafast.co.uk



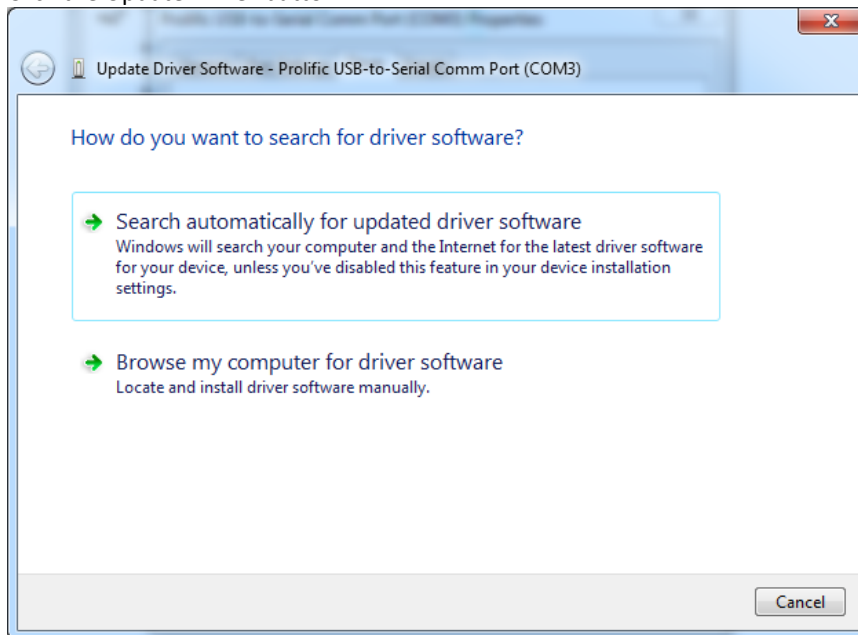
Double Click on this entry to open up the Properties.



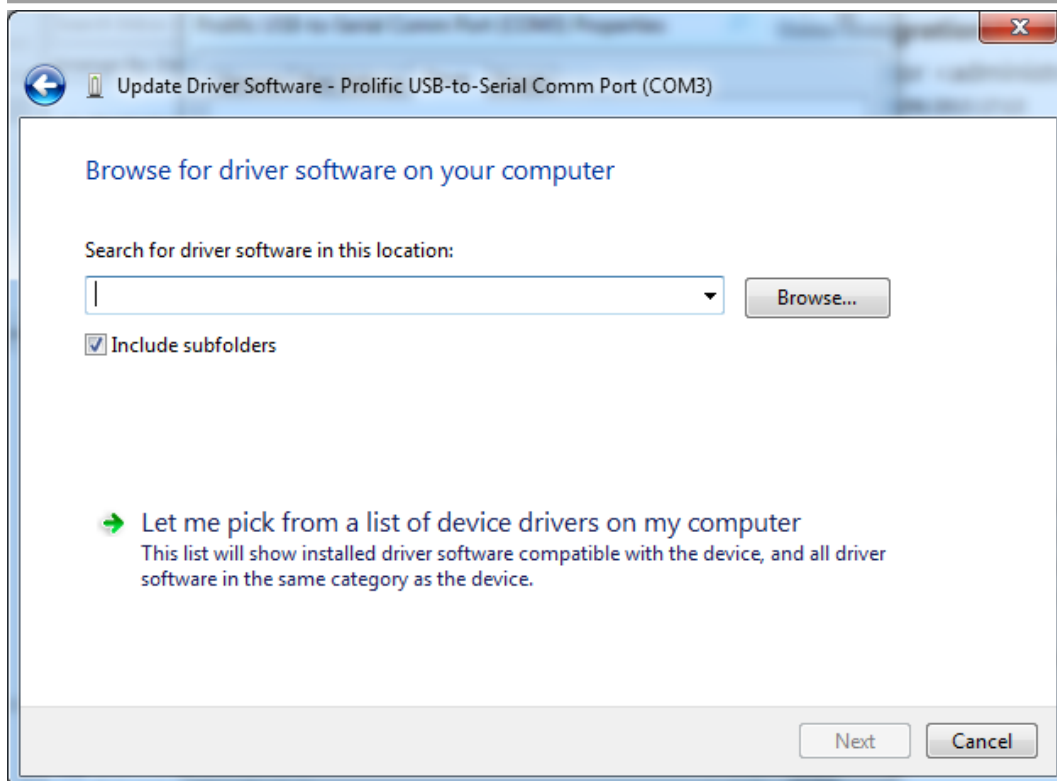
Click the Driver tab



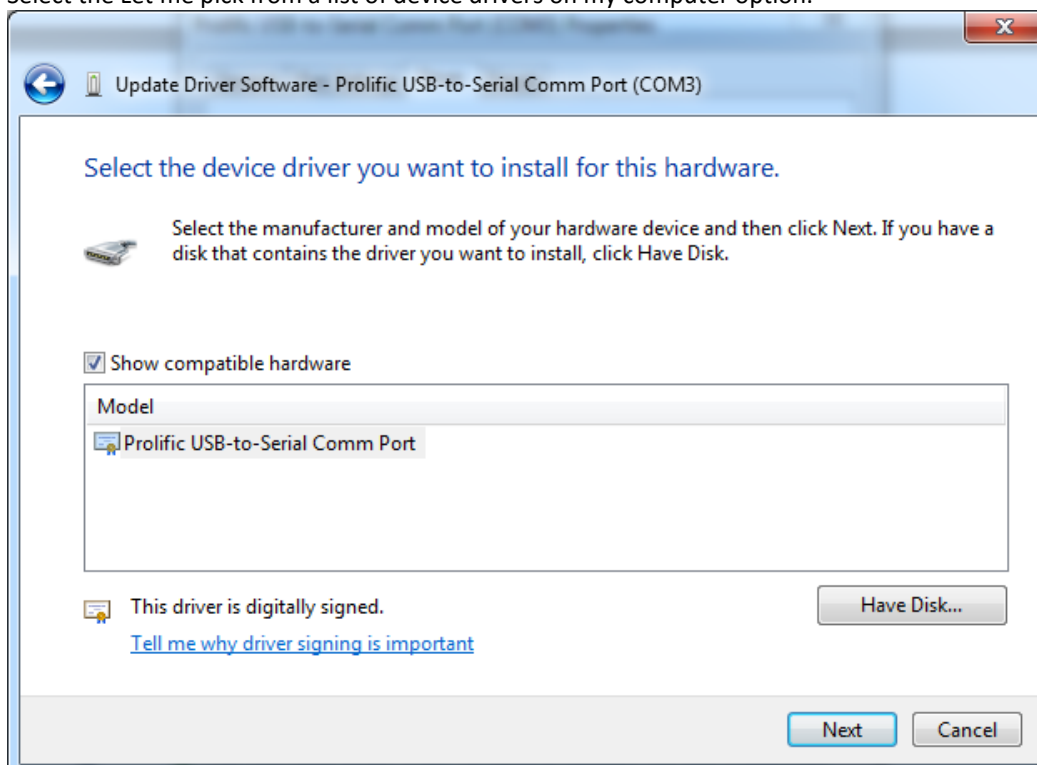
Click the Update Driver button:



Click the Browse my computer for driver software



Select the Let me pick from a list of device drivers on my computer option.



Select the correct driver, and click next. This will install the correct driver. You will need to restart the PC for this driver to be used.

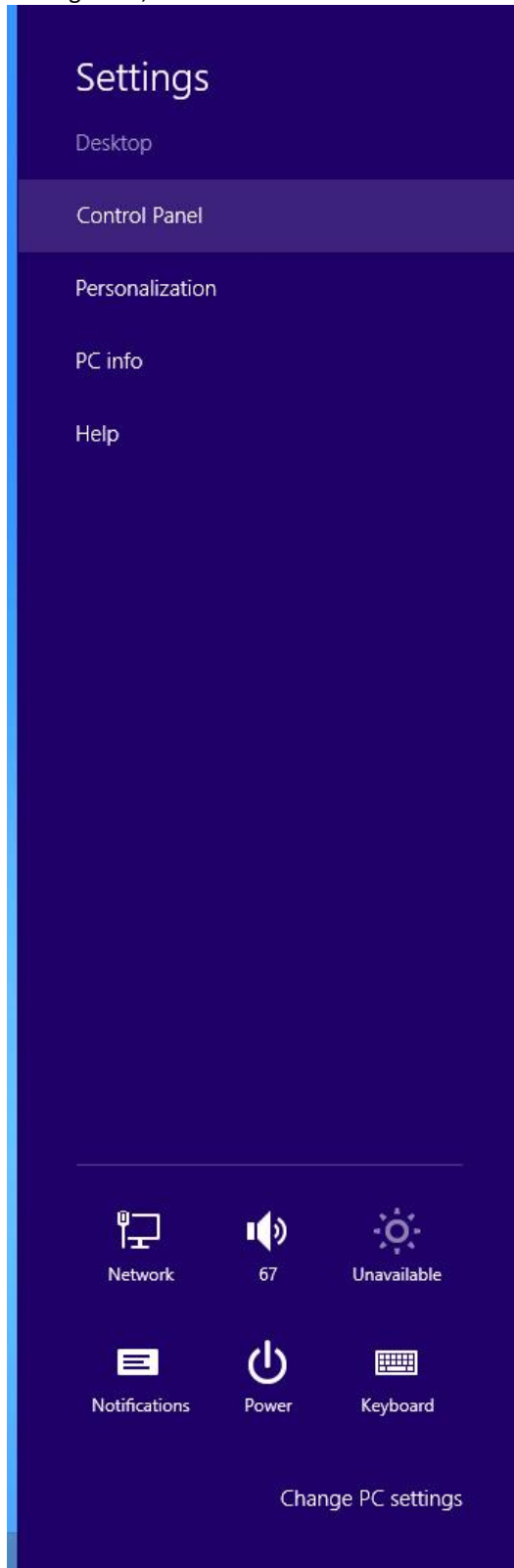


DTA Fast
52-54b Regent Street
Leamington Spa
CV32 5EG

t: +44 (0) 1926 889121
e: office@dtafast.co.uk
w: www.dtafast.co.uk

In Windows 8

Move the mouse to the bottom right corner of the screen to show the Settings panel, and then click the Settings icon, and then the Control Panel.

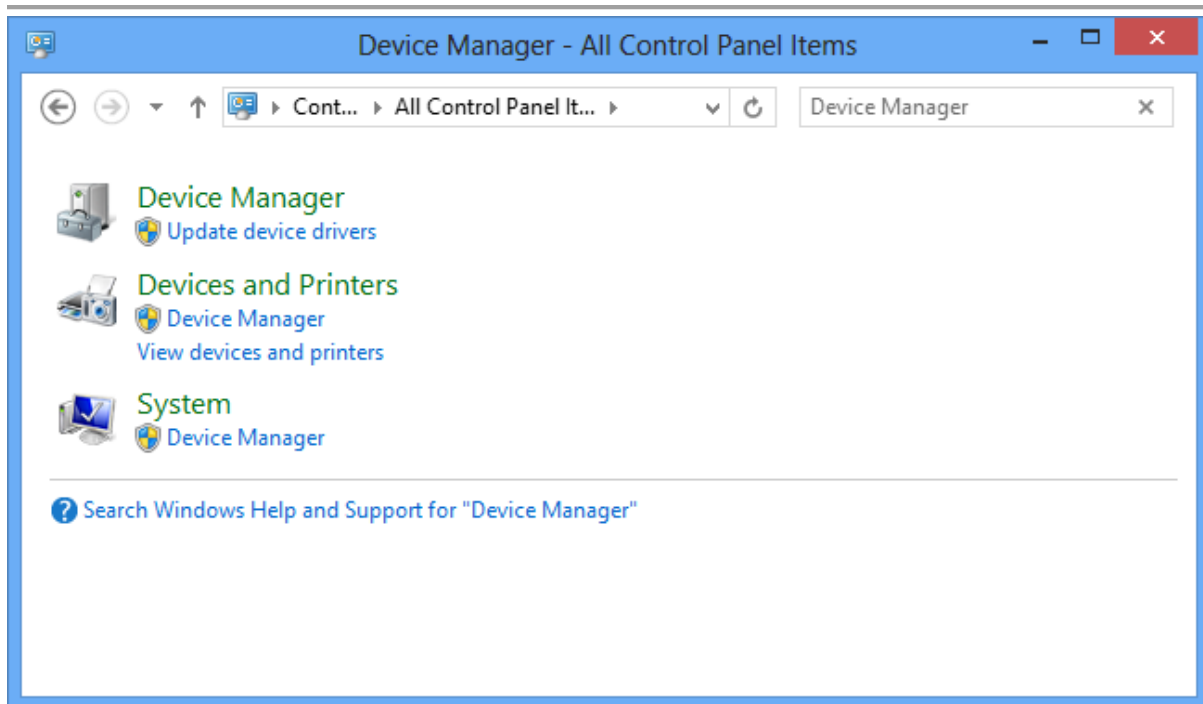


In the Search field in the top right corner of the Control Panel, type Device Manager.

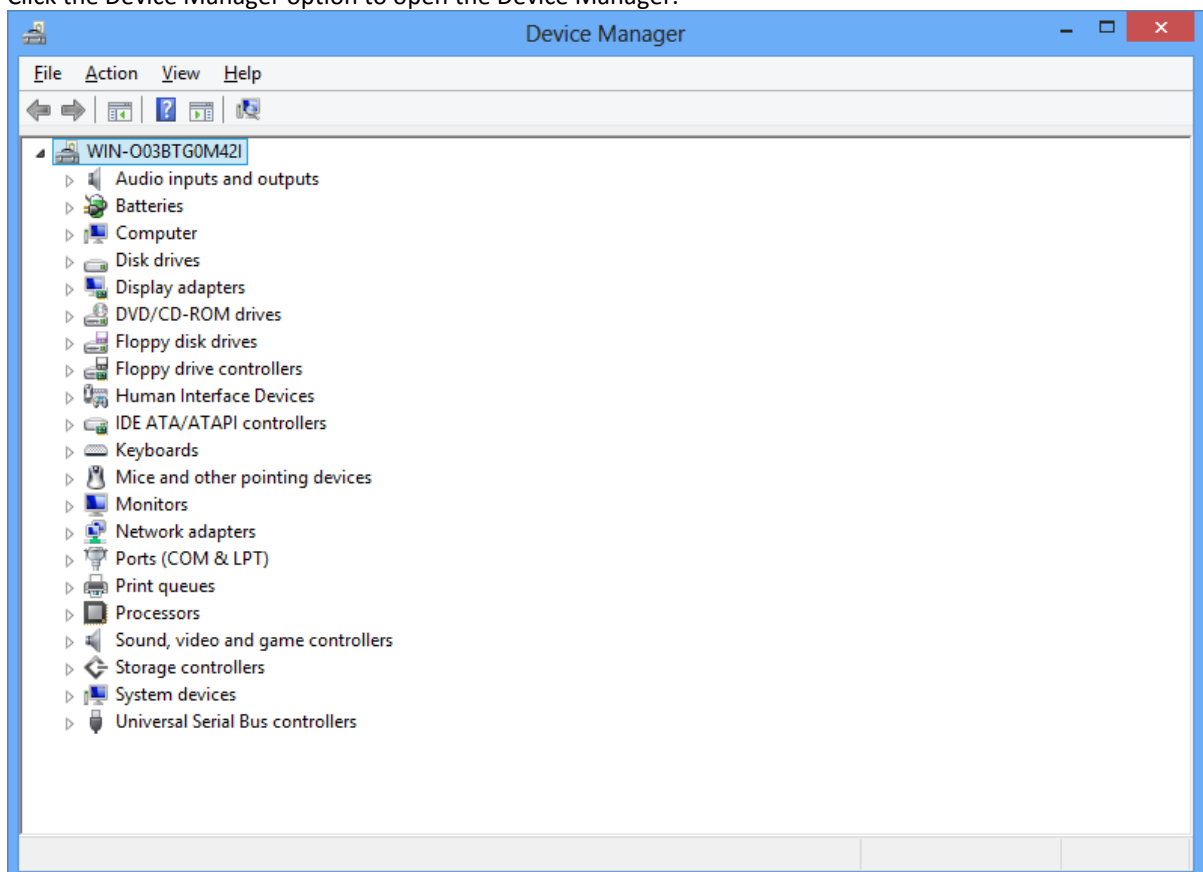


DTA Fast
52-54b Regent Street
Leamington Spa
CV32 5EG

t: +44 (0) 1926 889121
e: office@dtafast.co.uk
w: www.dtafast.co.uk



Click the Device Manager option to open the Device Manager.

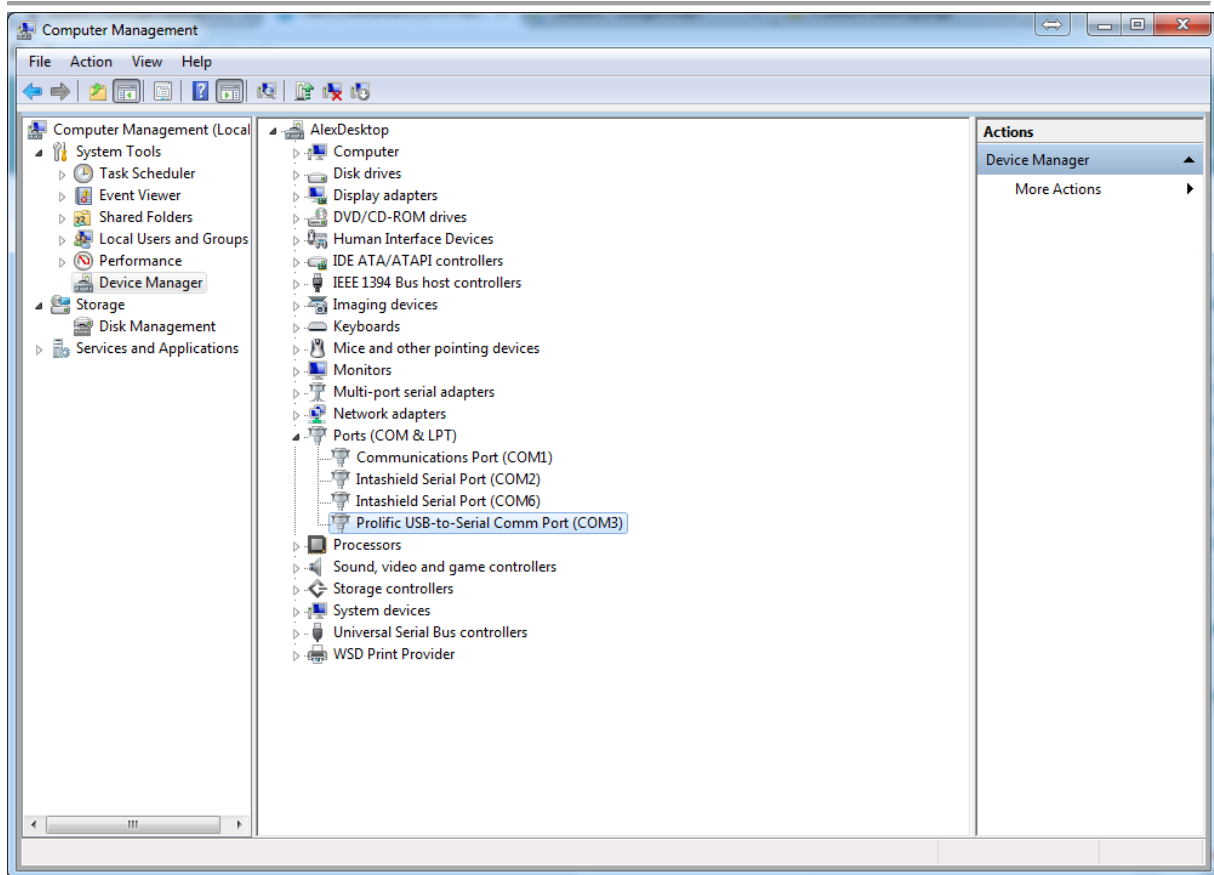


Expand the Ports (COM & LPT) value, which should have a USB Serial Port (COM2) or similar under it.

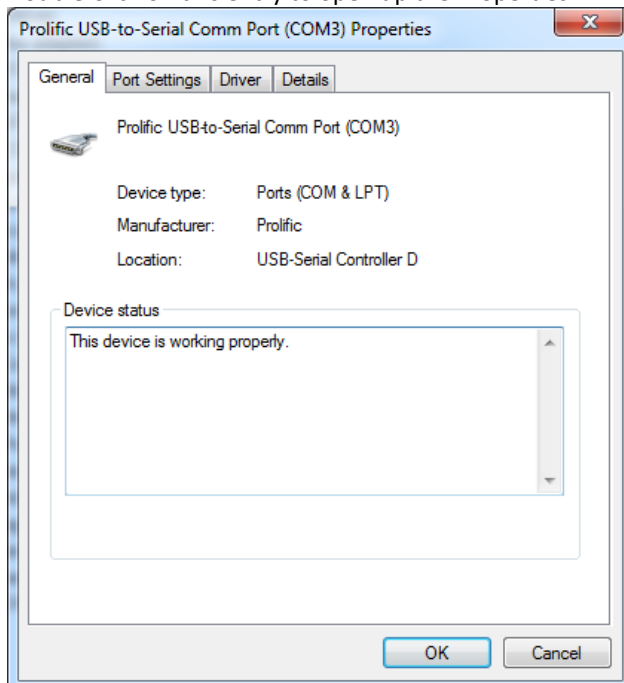


DTA Fast
52-54b Regent Street
Leamington Spa
CV32 5EG

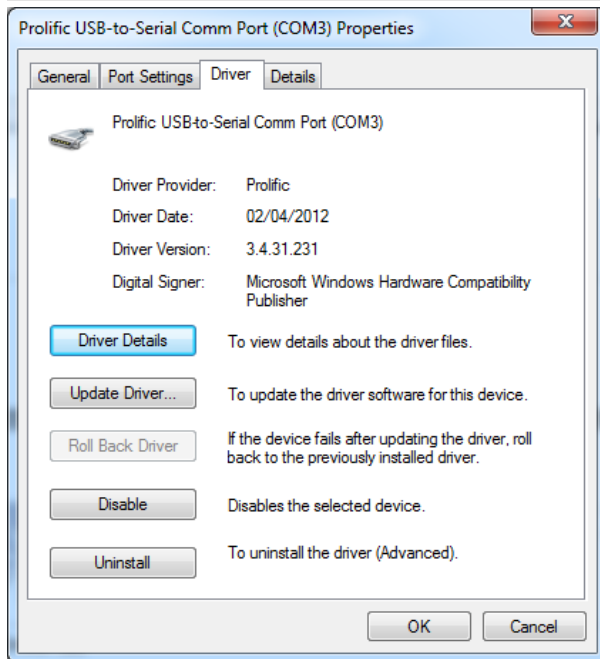
t: +44 (0) 1926 889121
e: office@dtafast.co.uk
w: www.dtafast.co.uk



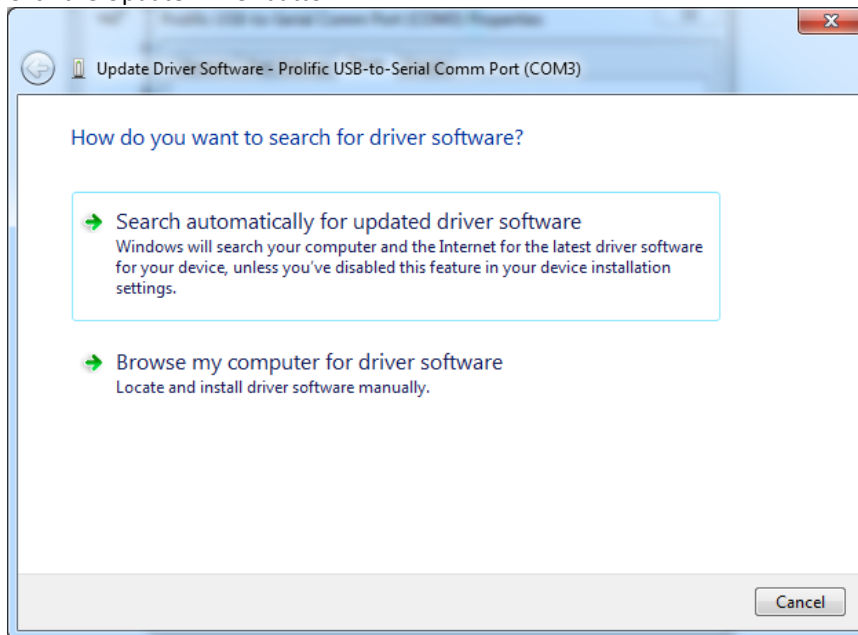
Double Click on this entry to open up the Properties.



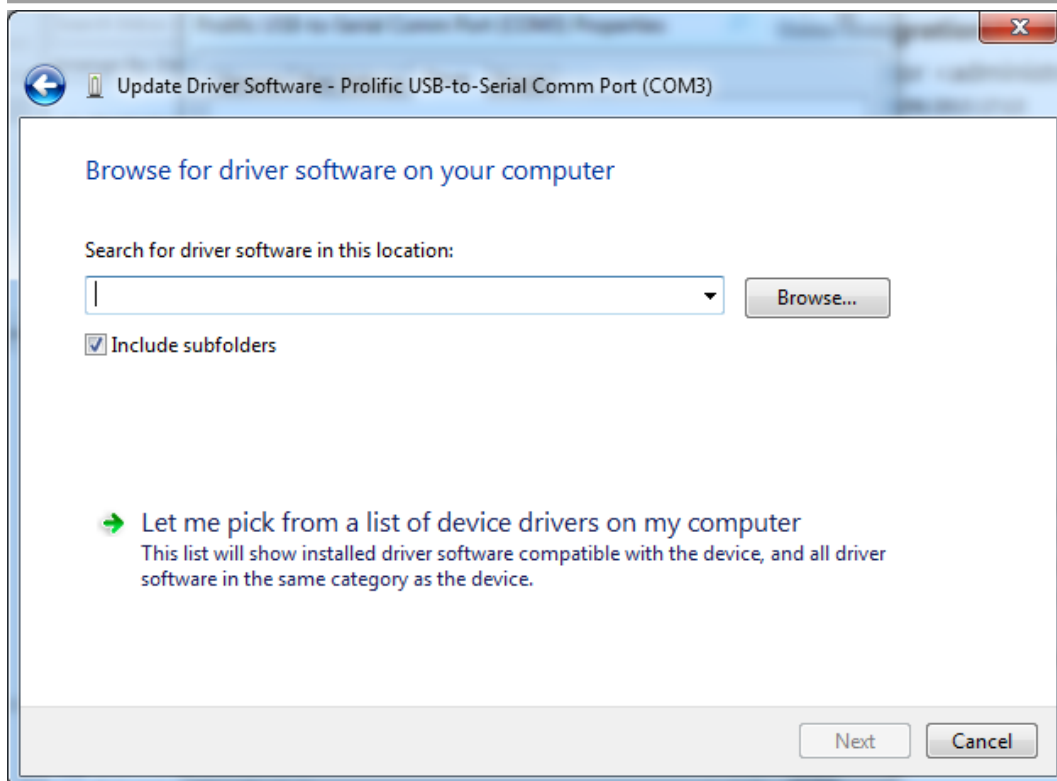
Click the Driver tab



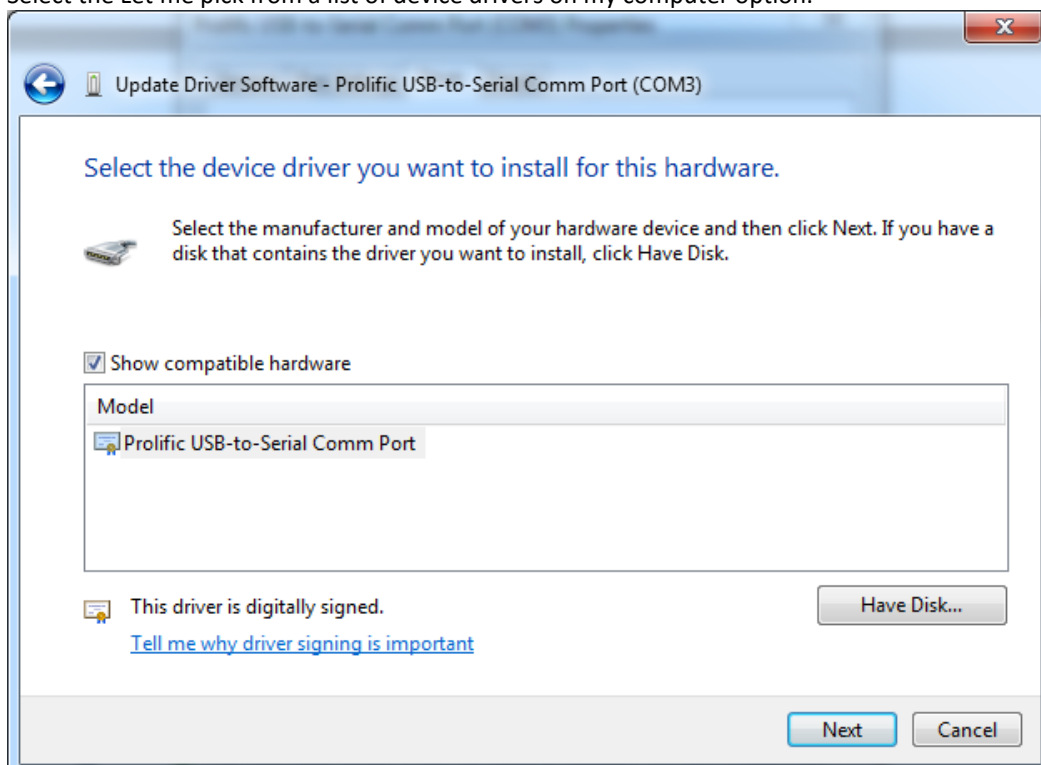
Click the Update Driver button:



Click the Browse my computer for driver software



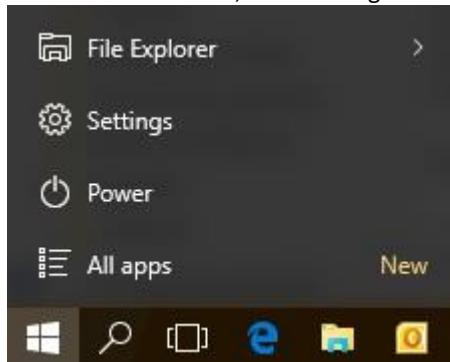
Select the Let me pick from a list of device drivers on my computer option.



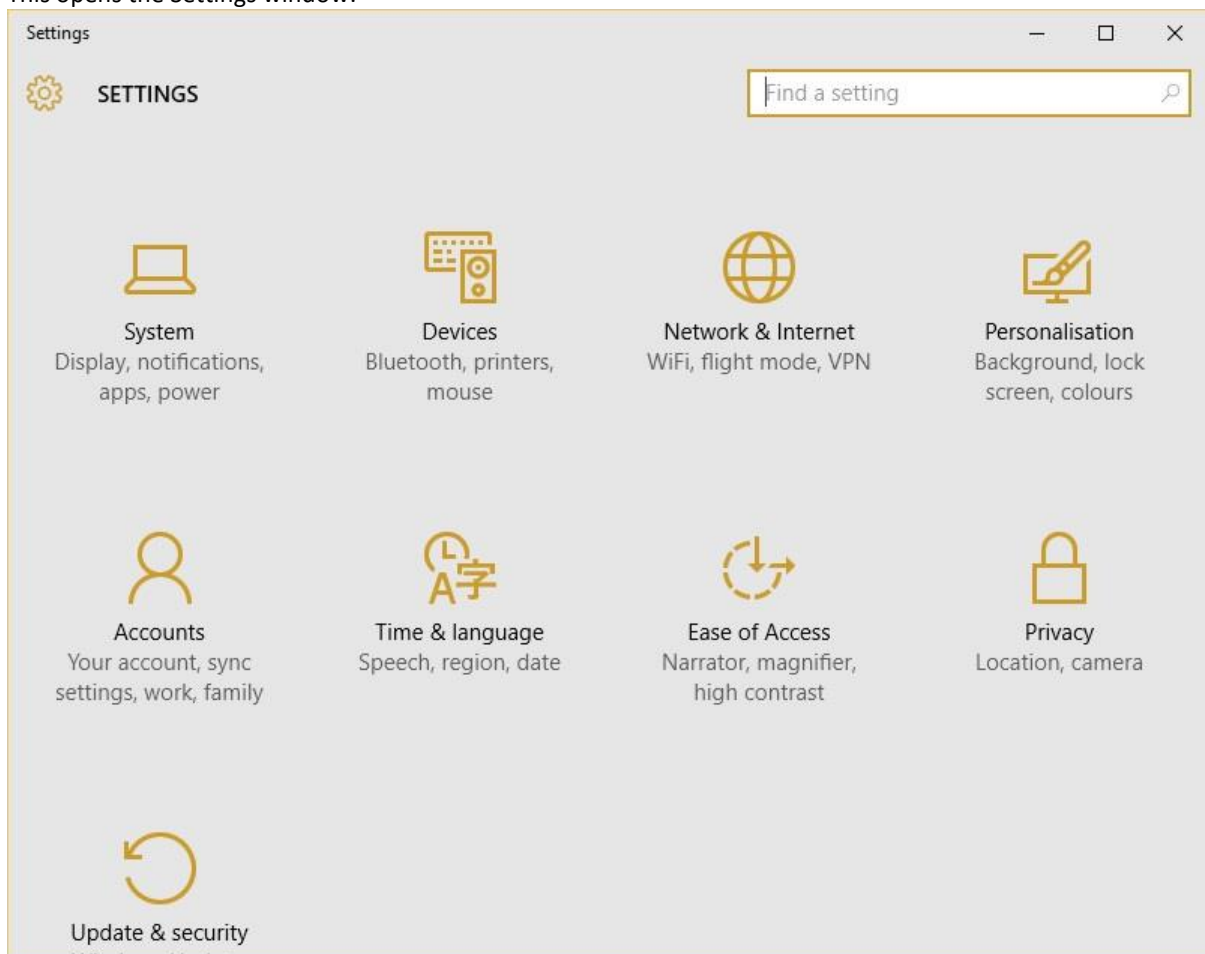
Select the correct driver, and click next. This will install the correct driver. You will need to restart the PC for this driver to be used.

In Windows 10

Click the start button, then Settings:



This opens the Settings window:

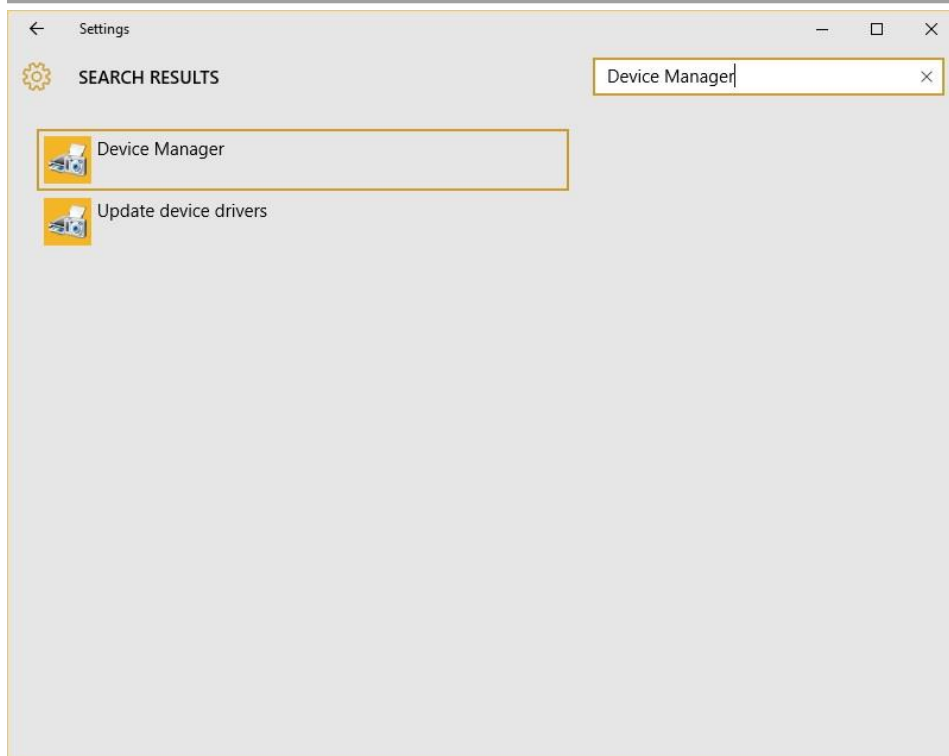


In the Find a setting (Search) field, type Device Manager:

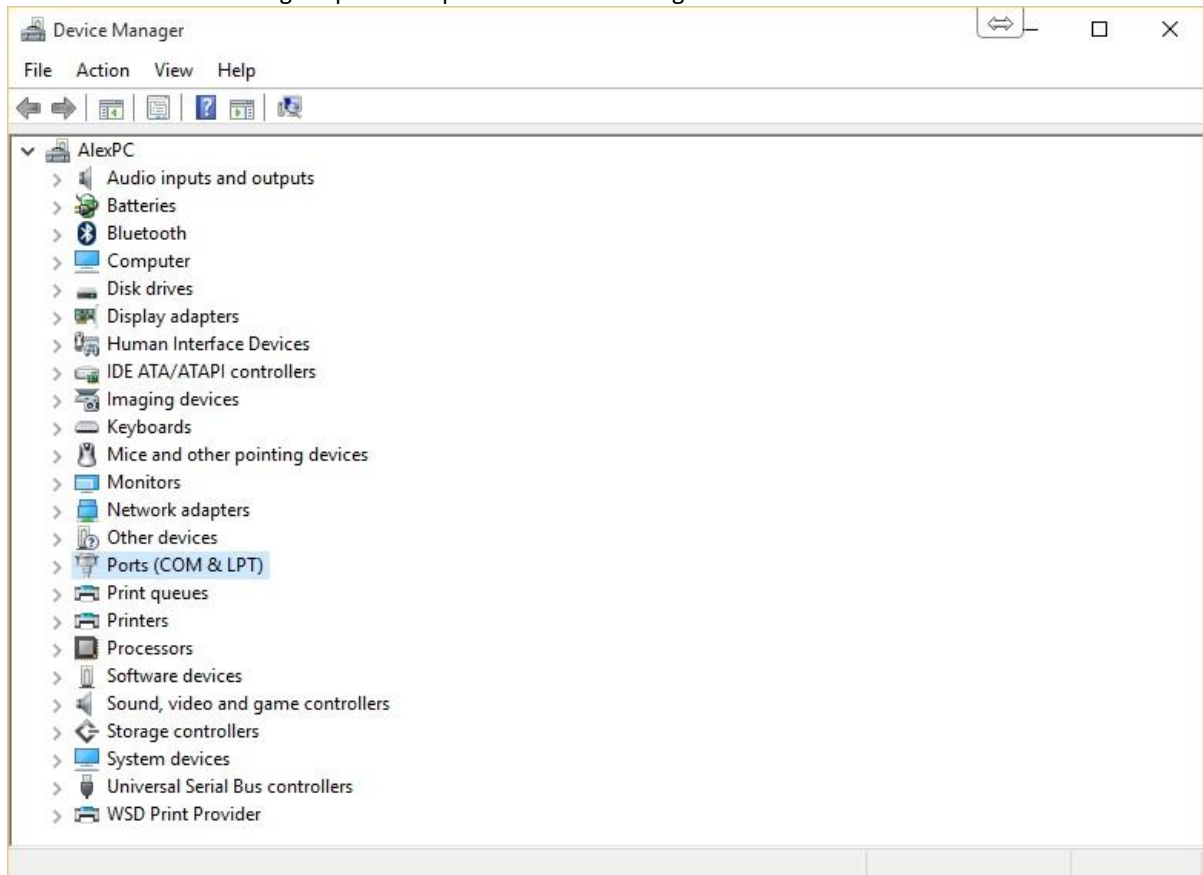


DTA Fast
52-54b Regent Street
Leamington Spa
CV32 5EG

t: +44 (0) 1926 889121
e: office@dtafast.co.uk
w: www.dtafast.co.uk



Click on the Device Manager option to open the Device Manager:

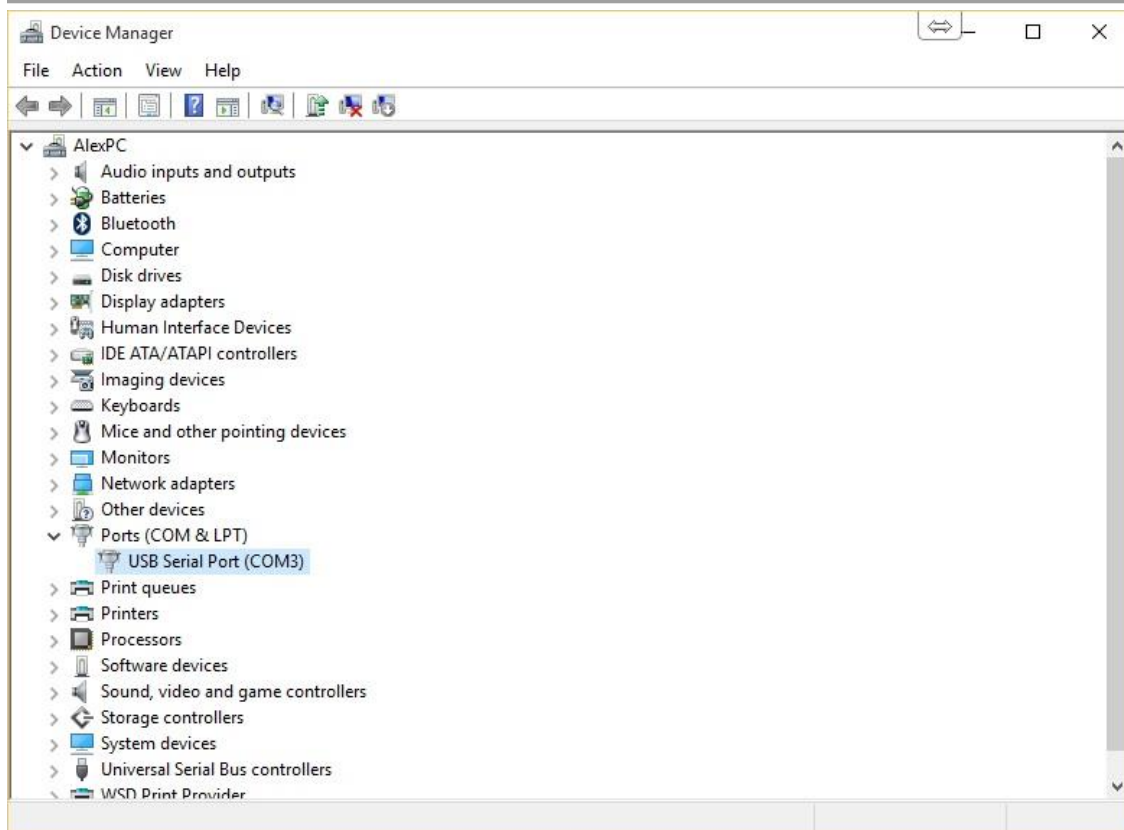


Expand the Ports (COM & LPT) value, which should have a USB Serial Port (COM2) or similar under it.

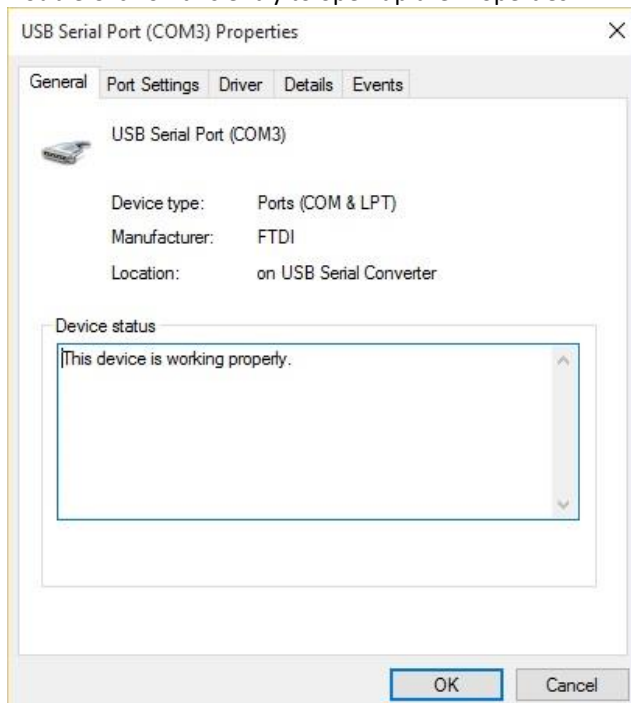


DTA Fast
52-54b Regent Street
Leamington Spa
CV32 5EG

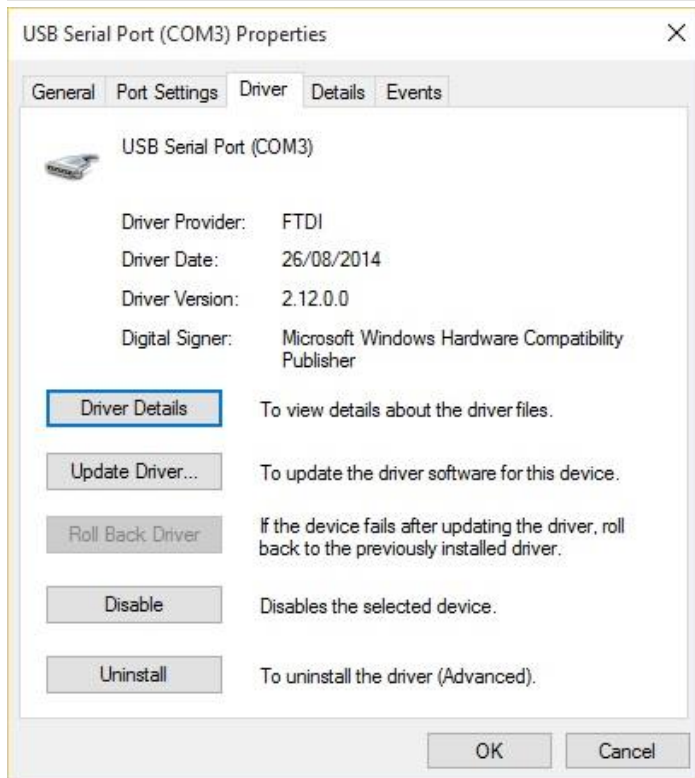
t: +44 (0) 1926 889121
e: office@dtafast.co.uk
w: www.dtafast.co.uk



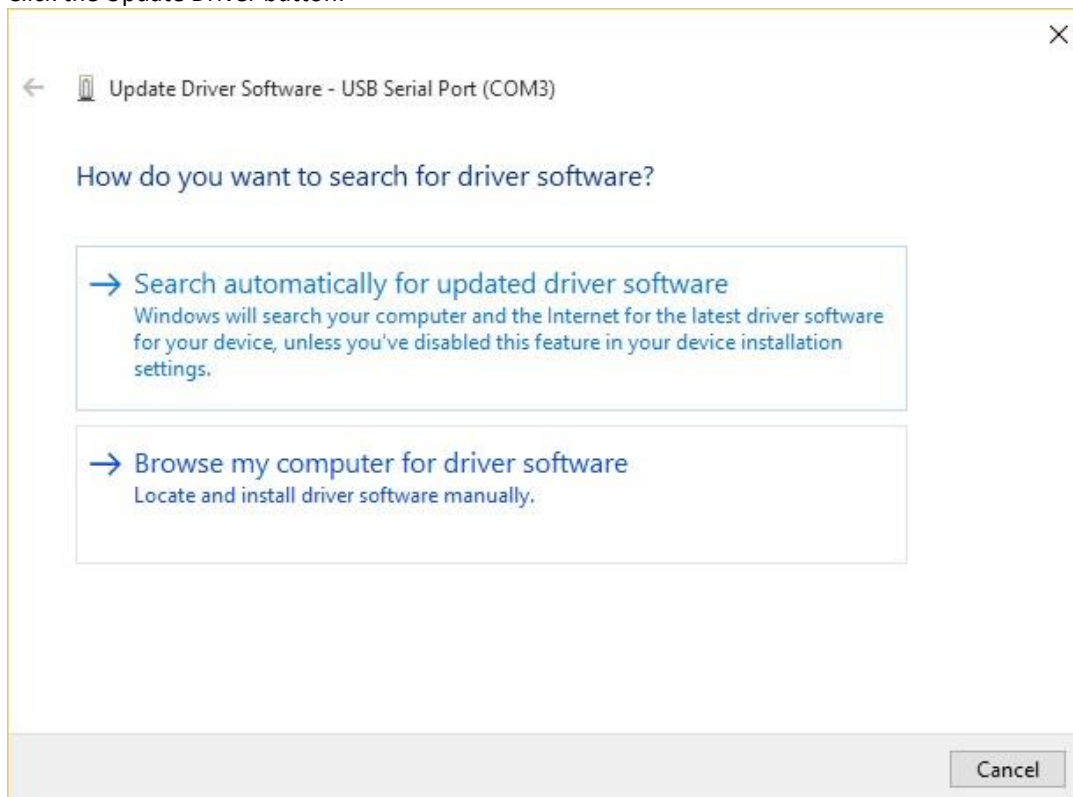
Double Click on this entry to open up the Properties.



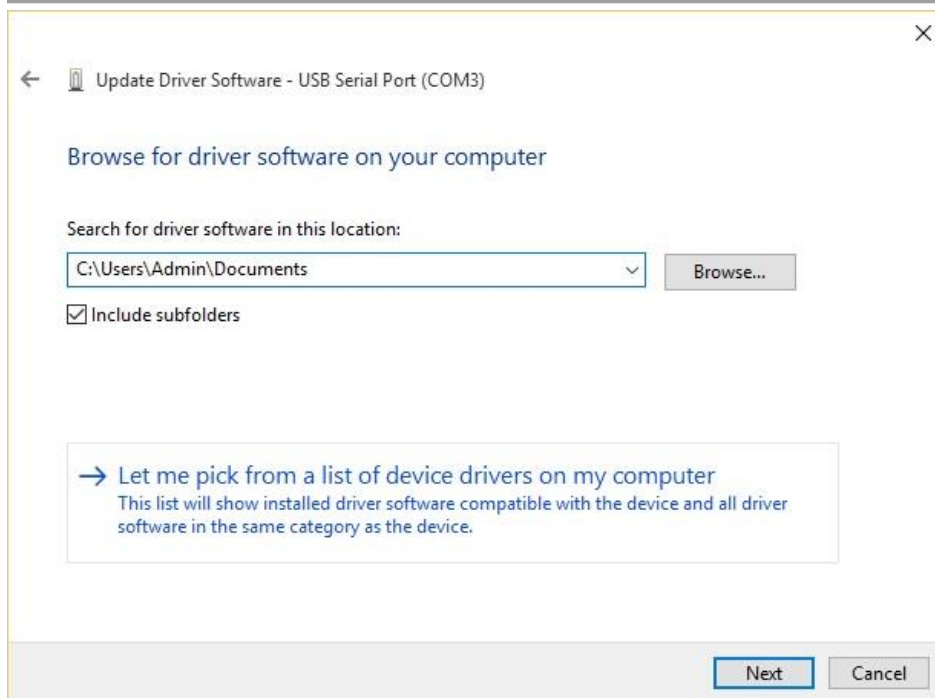
Click the Driver tab



Click the Update Driver button:



Click the Browse my computer for driver software



Select the Let me pick from a list of device drivers on my computer



Select the correct driver, and click next. This will install the correct driver. You will need to restart the PC for this driver to be used.