

# T-Series Firmware Flashing

## (Manual Procedure)

### Prerequisites:

- Install *Infineon Memtool 4.9/DAS64/Driver*
- Load *Target Configuration*

### Procedure Summary:

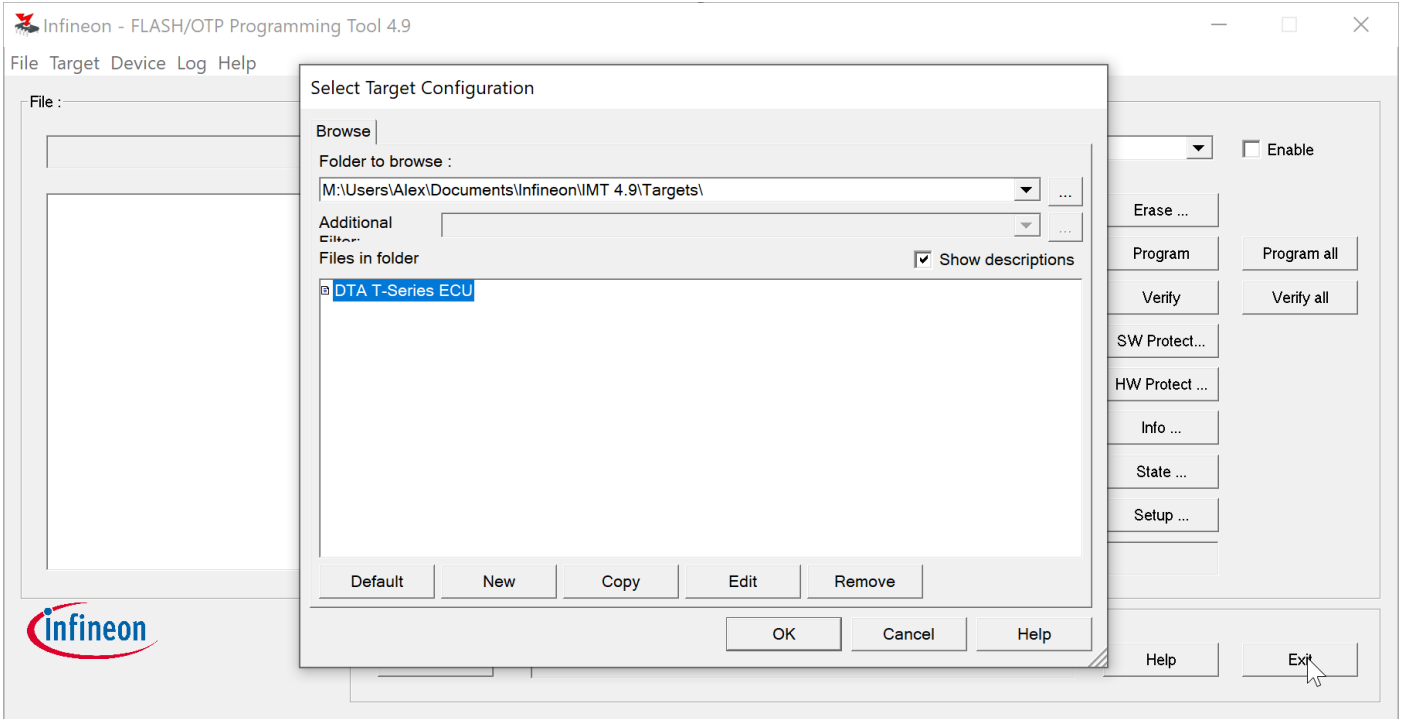
- Open Memtool 4.9
- Connect to ECU
- Select Firmware .hex file
- Select All
- Add All
- Program All
- Power Cycle ECU

## Procedure Detail:

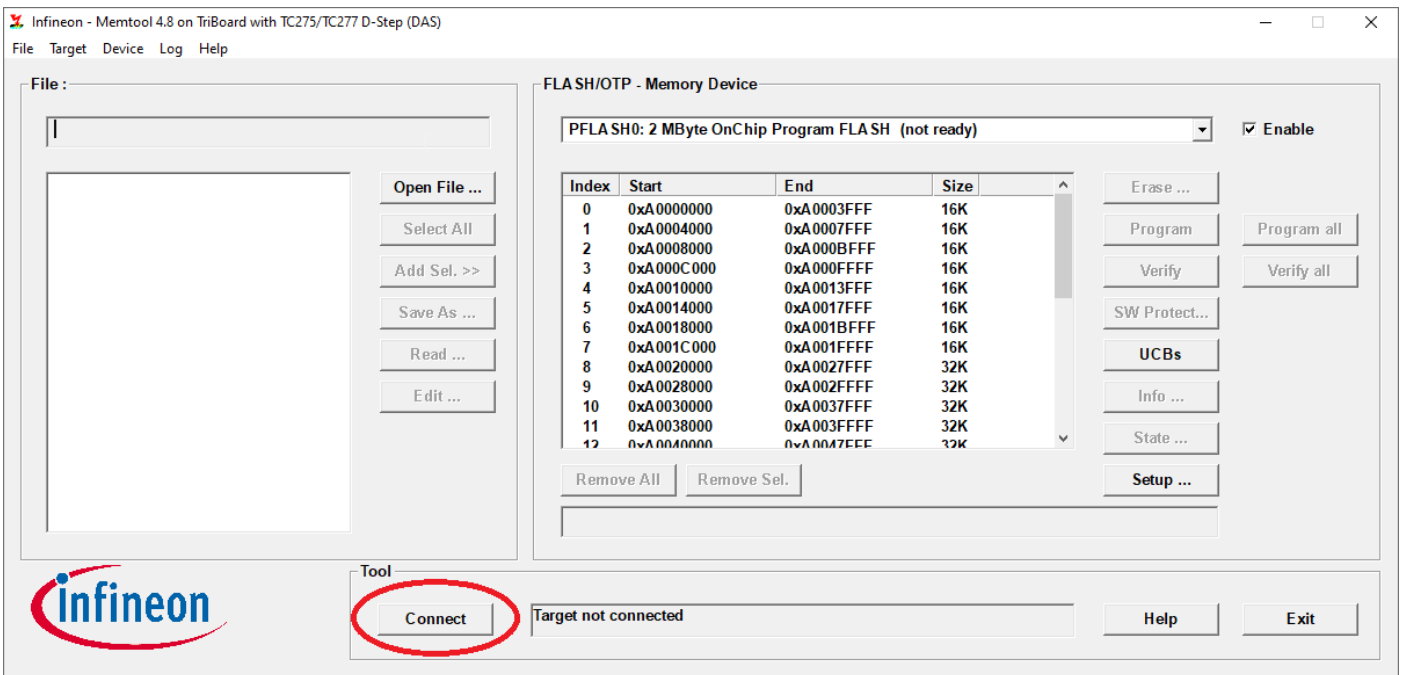
Install *Memtool 4.9* using the *DTA\_T-Series\_Firmware\_Install\_Tool.exe* file. During install, you will also be asked to install DAS64 and CDM Driver Package.



Open Memtool 4.9, select the DTA T-Series ECU target configuration and click "Ok" (you'll only have to do this once):



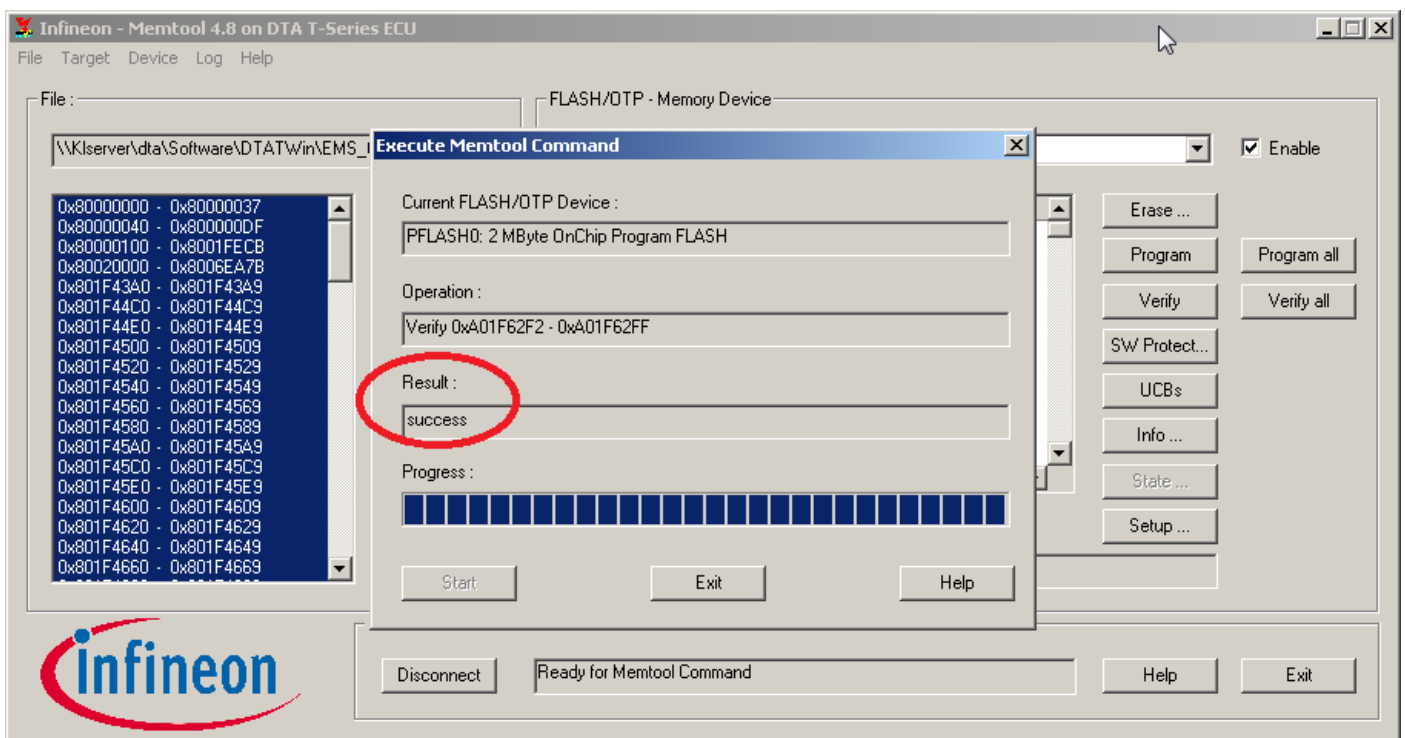
Plug in the ECU, wait for the drivers to install (this only happens the first time or if you use a different USB port) and then click "Connect":



The wording next to the *Connect* button should then change to “Ready for Memtool Command”

Once connected, click “*Open File*” and navigate to where you have downloaded the T-Series firmware .hex file.

Once the file is loaded, click “*Select All*”, then “*Add Sel. >>*” and finally “*Program all*”. Once the firmware has been flashed to the ECU, you will see the wording “*success*” in the *Result* box:



Now power-cycle the ECU and it will be ready to use with the new firmware.